

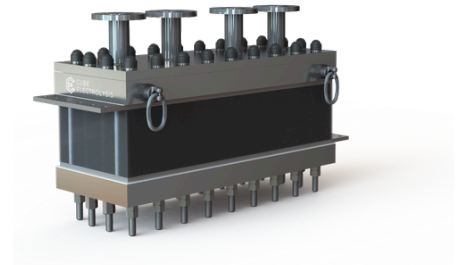
CUBE ELECTROLYSIS PEM STACK

400 kW

Maximum Power

7,9 kg/h

Maximum H₂ Output



PARAMETERS

Stack Current	max. 3750 A
Stack Voltage	max. 120 V
Operation Temperature	max. 80 °C
Temperature Difference Anode	max. 5 K
Water Quality	<0,1 µS/cm
Hydrogen Production	7,9 kg/h 87,3 Nm ³ /h
Oxygen Production	62,3 kg/h 43,6 Nm ³ /h
Water Flow Rate	min. 266 l/min 16m ³ /h
Stack Weight	255 kg
Stack Dimension (H x L x W)	(46 x 67 x 27) cm
Media Connections	4x DN40 Flanges

DIAGRAMM 65°C

